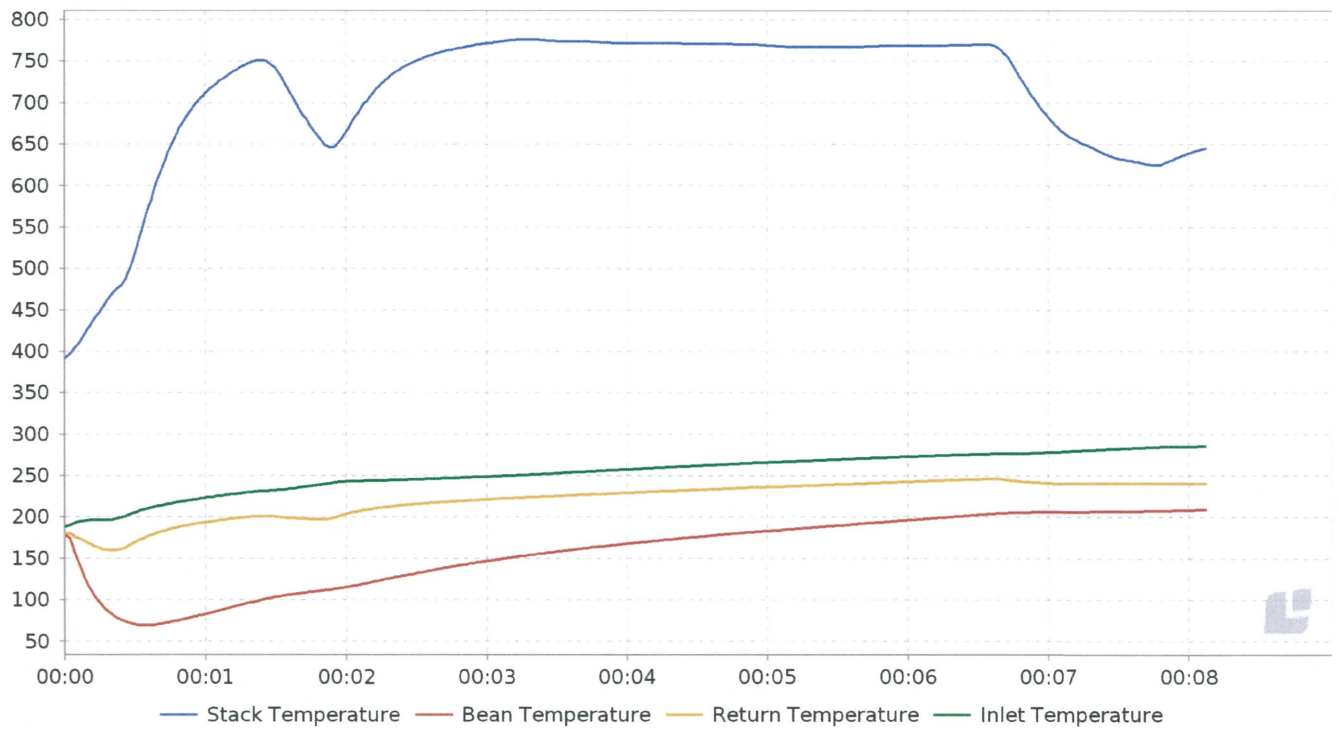
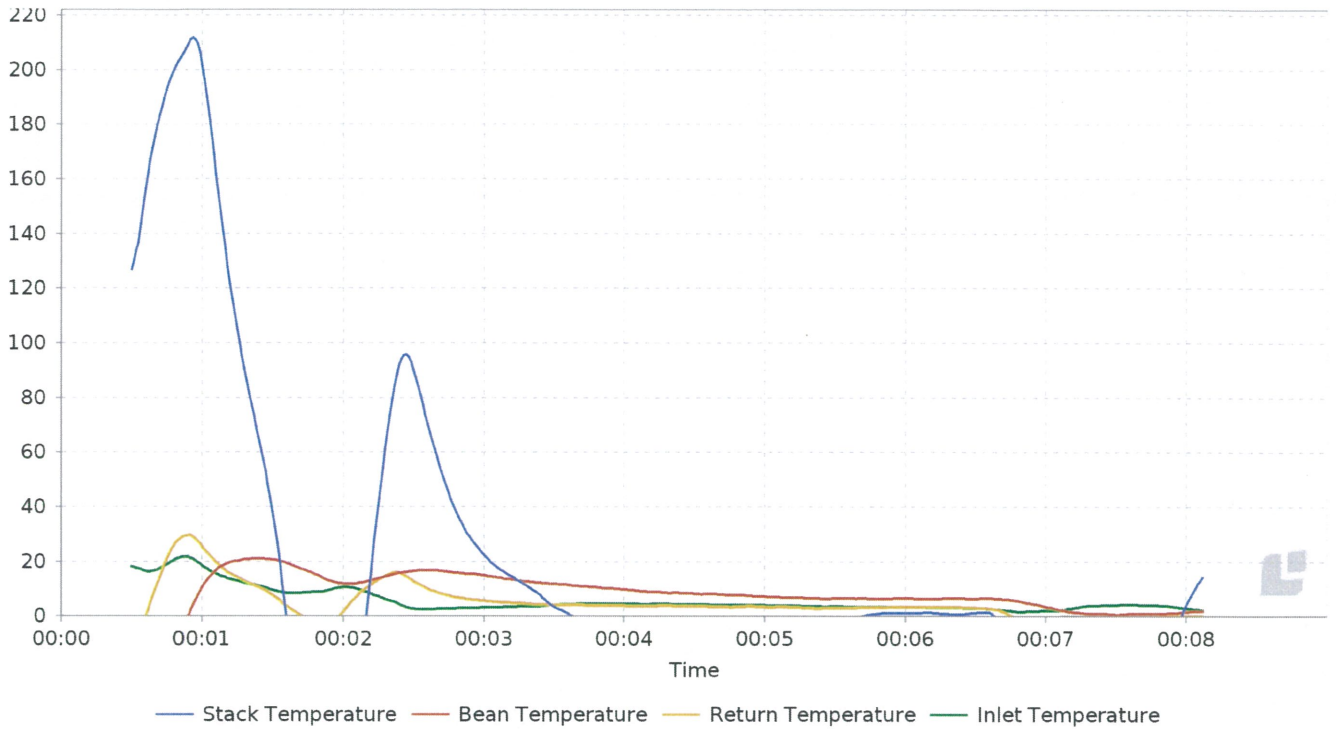


PR-0031 Peru Efrain Carhualloclo - Corazon de Chirinos - Cajamarca - - Masahiro Ohnishi

Profile Masahiro Ohnishi
Machine Loring S7 Nighthawk
Worker Taihei Yakumaru
Start date 2019-08-21 09:45
Duration 08:07
Start Weight 2.5 kg
End Weight 2.5 kg

Roast Area Index	76,694.6 °C	End Temperature	209.2 °C
Development time	100 s	Development time ratio	20.5 %
Charge Temperature	177.7 °C		





Details

Segments	Duration	RoR AVG	Roast Area Index (°C)
Start to Turning Point	00:34	-106.1	3,553.1
Turning Point to Color Change	03:08	9.0	22,413.2
Color Change to First Crack	02:45	7.7	30,289.8
Development time	01:41	2.8	20,856.9

Time	Event	Note
00:34	Turning Point	
03:42	Color change	
06:27	First Crack	

Time	Stack T... (°C)	RoR Stack T... (°C)	Bean Te... (°C)	RoR Bean Te... (°C)	Gas (%)	Return ... (°C)	RoR Return ... (°C)	Inlet T... (°C)	RoR Inlet T... (°C)
00:00	391.2		177.7		20.0	180.4		187.6	
00:30	518.0	126.8	70.4	-107.3	90.0	170.1	-10.3	205.7	18.1
01:00	711.4	201.9	83.2	10.8	80.0	193.8	25.4	223.2	18.5
01:30	741.9	38.2	103.5	20.6	20.0	200.6	7.7	232.3	9.6
02:00	664.7	-86.9	115.4	11.9	100.0	203.8	1.7	243.1	10.6
02:30	750.6	90.3	132.1	16.5		215.8	12.8	245.6	2.7
03:00	771.7	22.5	146.7	14.9	100.0	221.3	5.6	248.8	3.2
03:30	774.4	3.4	158.4	11.8	90.0	225.5	4.2	253.1	4.1
04:00	771.9	-2.7	168.1	9.8	85.0	229.3	3.8	257.6	4.6
04:30	770.8	-1.0	176.1	8.3		232.9	3.7	261.9	4.3
05:00	769.2	-1.3	183.3	7.2	75.0	236.3	3.4	265.9	4.0
05:30	767.4	-2.2	189.9	6.5		239.4	3.1	269.6	3.6
06:00	768.7	1.3	196.6	6.6		242.8	3.4	273.0	3.5
06:30	770.0	1.3	202.9	6.5	75.0	245.8	3.2	275.9	3.0
07:00	682.6	-82.3	206.2	3.5	25.0	240.9	-4.6	278.0	2.0
07:30	632.6	-54.0	206.9	0.6	30.0	240.1	-1.1	282.3	4.2
08:00	639.1	3.8	208.6	1.6	35.0	240.1	0.0	285.1	3.0
08:07	644.7	14.3	209.2	1.9	35.0	240.2	0.0	285.4	2.3